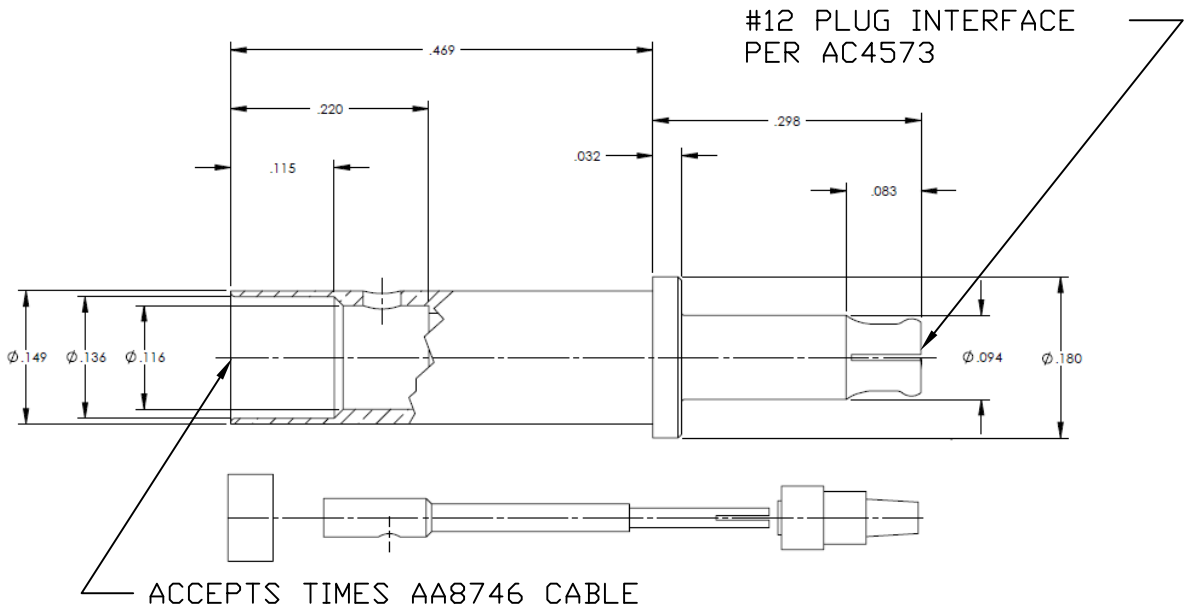


SYM	REVISION DESCRIPTION	DFTM	DATE	APPD	DATE
A	RELEASED FOR PRODUCTION	J. D. B.	8/2/00	J. D. B.	8/2/00
B	CHANGED PER CDC #20772	J. D. B.	8/8/00	J. D. B.	8/8/00
C	CHANGED PER CDC #21547	D. J. H.	9/19/01	J. D. B.	9/19/01
D	CHANGED PER CDC #22414	D. J. H.	3/31/03	J. D. B.	3/31/03
E	CHANGED PER CDC #22418	D. J. H.	4/4/03	J. D. B.	4/4/03
F	CHANGED PER CDC #30647	X. A. M.	6/21/10	J. D. B.	7/6/10
G	CHANGED PER CDC #38230	N. N. N.	8/6/13	J. D. B.	8/8/13



MATERIALS & FINISH

HOUSING & CONTACT: BERYLLIUM COPPER
ALLOY 25, GOLD PLATE 50-75
MICROINCHES THK. OVER NICKEL PLATE
50-100 MICROINCHES THK.
INSULATOR: PTFE.

ELECTRICAL SPECIFICATIONS

OPERATING FREQUENCY: D.C.- 40 GHz.
IMPEDANCE: 50 OHMS, NOMINAL.
V.S.W.R.: 1.05 + .005FGHZ.
INSERTION LOSS: .03√FGHZ.
D.W.V.: 500VRMS.

MATL: W.D. #011957	UNLESS OTHERWISE SPECIFIED	DFTM. J. D. B.	TIMES MICROWAVE SYSTEMS		
	MACHINED SURFACES FINISH 64 RMS MAX. REMOVE ALL BURRS .005 MAX. BREAK MACHINE CORNERS .005 MAX. FILLET R.	DATE 8/2/00			
USED ON:	TOLERANCES ON DECIMALS .XX ± .01 .XXX ± .005 ANGLES ± 1° FRACTIONS ± 1/64	CHKD. J. D. B.	#12 PLUG PER AC4573 FOR CABLE MI-51935 (AA8746) (MIL-C-38999)		
		DATE 8/2/00			
SCALE: NONE	DWG. SIZE A	APPD. J. D. B.	1 of 1 3190-994 R G		
		DATE 8/2/00			
DO NOT SCALE DRAWING	CODE IDENT 68999	DATE 8/2/00			